

SHOP FLOOR DISPATCH



FUJITSU GLOVIA



The Shop Floor Dispatch application provides your production team with a visual 'one-stop' tool for managing and recording production and Inspection activity.

Highly configurable displays and information filters provide the ability to create individual personalized production dispatch list for both machines and employees that exactly meets the business needs without requiring any programming or customization.

Features

Users can record production activity with just one or two clicks or touches of the screen allowing them to maximize their productivity whilst keeping the system updated with real time information.

Visual indicators are used to identify component shortages, tool shortages, if other users are clocked onto an operation, prior operation status and upcoming in-process/ after operation inspection requirements.

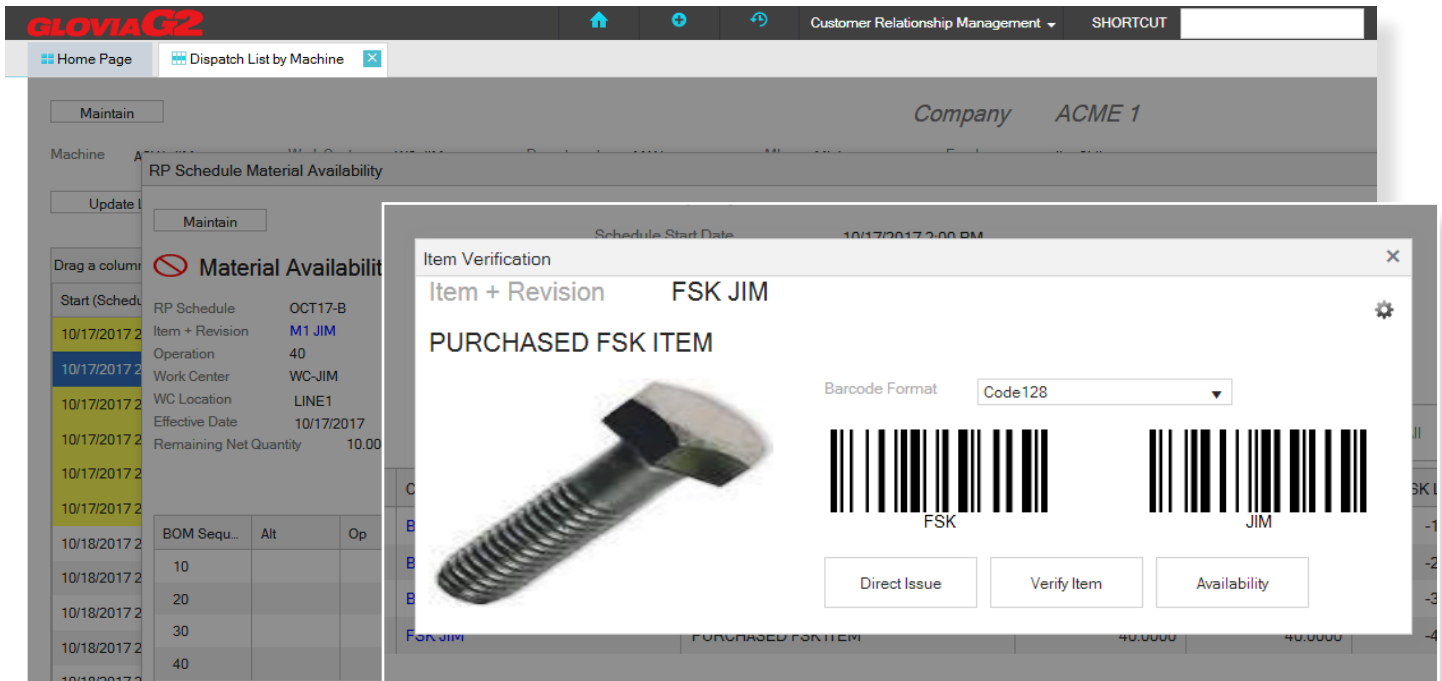
Function + Description	S/U	Comp...	Tool ...	Prior Op...	Inspection
DRILL DRILLING	Set-up	⊘	⊘	✓	⚠ In Process
DRILL DRILLING	Run	⊘	⊘	✓	⚠ In Process
ASSY	Set-up	✓	✓	⚠	
ASSY	Run	✓	✓	⚠	
SERVICE PLANT MAINTENANCE	Set-up	✓	✓	⊘	⚠ Send To Inspection
SERVICE PLANT MAINTENANCE	Run	✓	✓	⊘	⚠ Send To Inspection
DRILL DRILLING	Set-up	⊘	⊘	✓	⚠ In Process
DRILL DRILLING	Run	⊘	⊘	✓	⚠ In Process

The screenshot shows the GLOVIA G2 interface with a sidebar on the left containing navigation options like 'Home Page' and 'Dispatch List by Machine'. The main area displays a table with columns for 'Function + Description', 'S/U', 'Comp...', 'Tool ...', 'Prior Op...', and 'Inspection'. The table rows are color-coded (yellow for active/urgent, grey for completed). A detailed view of the table data is shown below.

Maximize User Productivity

The solution has been carefully designed to maximize user productivity by minimizing the effort of recording production activity. For example:

- Most transactions can be completed with just a couple of clicks,
- The system automatically fills in information, changes prompts based on input and chains to the next normal transaction where appropriate.



Where Factory Planning is deployed - operations will be displayed based on the operation information synchronized from Factory Planning.

One-touch Access

The dispatch lists provide for personalized, secure, instant, one-touch access to those transactions the production team needs.

- Clock-on, clock-off
- Component scrap
- Operation scrap
- Assembly scrap
- Operation/item completions
- Inspection results/alerts
- Component verification
- Availability and issues
- Tooling verification
- Availability and issues
- Order releasing
- Order inquiry/maintenance

Fujitsu Glovia
Tel: +1 800 223-3799
+1 310 563-7000
Fax: +1 310 563-7300
Email: marketing@glovia.com
www.glovia.com

FUJITSU
FUJITSU GLOVIA